

# BLOOD CULTURE

A key investigation for the  
diagnosis of bloodstream infections





## OUR SPECIAL THANKS GO TO



**Dr. Jennifer Dien Bard**, PhD D(ABMM)

Director of Clinical Microbiology and Virology,  
Children's Hospital Los Angeles;

Professor of Pathology, University of Southern  
California, Los Angeles, California, USA

*for her helpful advice and comprehensive review  
of this booklet.*

# INTRODUCTION

“...Positive blood culture results either establish or confirm an infectious etiology of a patient’s illness. Moreover, [they also provide] the etiologic agent for AST\*, which, in turn, optimizes antimicrobial therapy.”<sup>1</sup>

**The laboratory detection of bacteremia and fungemia** using blood cultures is one of the most simple and commonly used investigations to establish the etiology of bloodstream infections.

**Rapid, accurate identification** of the bacteria or fungi causing bloodstream infections provides vital clinical information required to diagnose and treat sepsis.

**Sepsis** is a complex inflammatory process that is largely under-recognized as a major cause of morbidity and mortality worldwide. There are an estimated 49 million cases and 11 million deaths worldwide each year,<sup>2</sup> meaning that sepsis causes 1 death almost every 3 seconds.<sup>3</sup>

**Early diagnosis and appropriate treatment** make a critical difference when it comes to improving sepsis patient outcomes. Chances of survival decline drastically the longer initiation of treatment is delayed. If a patient receives antimicrobial therapy within the first hour of diagnosis, chances of survival are close to 80%; this is reduced by 7.6% for every hour after. Yet, if a patient initially receives inappropriate antimicrobial treatment, they are five times less likely to survive.<sup>4</sup>

This booklet aims to:

- **answer key questions** commonly asked in relation to blood culture
- **provide practical recommendations** for routine blood culture procedures
- **offer an illustrated step-by-step guide** to best blood culture collection practices.

This booklet is intended to be a useful reference tool for physicians, nurses, clinical microbiologists, phlebotomists, laboratory personnel and all other healthcare professionals involved in the blood culture process.

\* AST: Antimicrobial Susceptibility Testing

# DEFINITIONS

**Bacteremia:** the presence of bacteria in the blood. It may be transient, intermittent or continuous.

**Blood culture:** blood specimen submitted for culture of microorganisms. It enables the recovery of potential pathogens from patients suspected of having bacteremia or fungemia.

**Blood culture series:** a group of temporally related blood cultures that are collected to determine whether a patient has bacteremia or fungemia.

**Blood culture set:** the combination of blood culture bottles (one aerobic and one anaerobic) into which a single blood collection is inoculated.

**Bloodstream infection (BSI):** an infection associated with bacteremia or fungemia.

**Contaminant:** a microorganism recovered from a blood culture that was introduced during specimen collection or processing and is not considered responsible for BSI (i.e. the isolates were not present in the patient's blood when the blood was sampled for culture).

**Contamination:** presence of microorganisms in the bottle that entered during sampling but were not actually circulating in the patient's bloodstream.

**Fungemia:** the presence of fungi in the blood.

**Sepsis:** life-threatening organ dysfunction caused by a dysregulated host response to infection characterized by fever, chills, malaise, tachycardia, etc. when circulating bacteria multiply at a rate that exceeds removal by phagocytosis.<sup>5</sup>

**Septic episode:** an episode of sepsis or septic shock for which a blood culture or blood culture series is drawn.

**Septic shock:** a subset of sepsis in which underlying circulatory and cellular metabolism abnormalities are profound enough to substantially increase mortality.<sup>5</sup>

*Source: CLSI. Principles and Procedures for Blood Cultures. 2nd ed. CLSI guideline M47. Clinical and Laboratory Standards Institute; 2022 unless otherwise specified.*

# TABLE OF CONTENTS

	<b>BLOOD CULTURE ESSENTIALS</b>	p. 4
	<b>1</b> What is a blood culture?	p. 4
	<b>2</b> Why are blood cultures important?	p. 4
	<b>3</b> When should a blood culture be performed?	p. 5
	<b>4</b> What volume of blood should be collected?	p. 6
	<b>5</b> How many blood culture sets should be collected?	p. 8
	<b>6</b> Which media to use?	p. 10
	<b>7</b> Timing of blood cultures	p. 11
	<b>8</b> How to collect blood cultures	p. 12
	<b>9</b> How many days of incubation are recommended?	p. 14
	<b>10</b> Is it a contaminant or a true pathogen?	p. 15
<b>2</b>	<b>SPECIAL TOPIC: INFECTIVE ENDOCARDITIS</b>	p. 18
	<b>PROCESSING POSITIVE BLOOD CULTURES</b>	p. 20
<b>4</b>	<b>INTERPRETATION OF RESULTS</b>	p. 22
	<b>BLOOD CULTURE/ SEPSIS GUIDELINES</b>	p. 24
	REFERENCES	p. 26
	RECOMMENDATIONS FOR BLOOD CULTURE COLLECTION	p. 30



# 1 BLOOD CULTURE ESSENTIALS

## 1 What is a blood culture?

A blood culture is a laboratory test in which blood, taken from the patient, is inoculated into bottles containing culture media to determine whether infection-causing microorganisms (bacteria or fungi) are present in the patient's bloodstream.

### → Blood cultures are intended to:

- confirm the presence of microorganisms in the bloodstream
- identify the microbial etiology of the bloodstream infection
- help determine the source of infection
- provide an organism for antimicrobial susceptibility testing and optimization of antimicrobial therapy

\* Adapted from ESCMID (European Society of Clinical Microbiology and Infectious Diseases) guidelines, 2012.<sup>6</sup>

## 2 Why are blood cultures important?

Blood culture is the most widely used diagnostic tool for the detection of bacteremia and fungemia. It is the most important way to diagnose the etiology of bloodstream infections and sepsis and has major implications for the treatment of those patients.

A positive blood culture either establishes or confirms that there is an infectious etiology for the patient's illness.<sup>1</sup> A positive blood culture also provides the etiologic agent for antimicrobial susceptibility testing, enabling optimization of antibiotic therapy.<sup>1</sup> Sepsis is one of the most significant challenges in critical care, and early diagnosis is one of the most decisive factors in determining patient outcome. Early identification of pathogens in the blood can be a crucial step in assuring appropriate therapy, and beginning

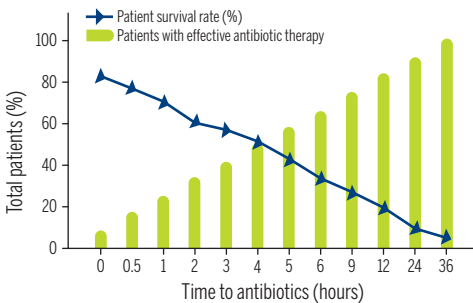
effective antibiotic therapy as early as possible can have a significant impact on the outcome of the disease.<sup>7,8</sup>

### → Providing adequate antibiotic therapy within the first 24-48 hours leads to:<sup>9-13</sup>

- decreased infection-related mortality (20-30%)
- earlier recovery and shorter length of hospital stay
- reduced risk of adverse effects
- reduced risk of antimicrobial resistance
- cost reduction (length of stay, therapy, diagnostic testing)

**Figure 1: Fast effective antimicrobial therapy increases survival chances<sup>14</sup>**

Adapted from Kumar A, et al. *Crit Care Med.* 2006;34(6):1589-96. Reproduced with permission.



### 3 When should a blood culture be performed?

Blood cultures should always be requested when a bloodstream infection or sepsis is suspected.<sup>15</sup>

### → Clinical symptoms in a patient which may lead to a suspicion of a bloodstream infection are:<sup>16</sup>

- undetermined fever ( $\geq 38.3^{\circ}\text{C}$ ) or hypothermia ( $\leq 36^{\circ}\text{C}$ )
- shock, chills, rigors
- vomiting
- severe local infections (meningitis, endocarditis, pneumonia, pyelonephritis, intra-abdominal suppuration...)
- abnormally raised heart rate ( $>90$  beats/min)
- low blood pressure ( $<90$  mm Hg)
- raised respiratory rate ( $>20$  breaths/min)

### → Blood cultures should be collected:

- as soon as possible after the onset of clinical symptoms;
- ideally, prior to the administration of antimicrobial therapy.<sup>17</sup>

If the patient is already on antimicrobial therapy, recovery of microorganisms may be increased by collecting the blood sample immediately before administering the next dose and by inoculating the blood into bottles containing specialized antimicrobial neutralization media.<sup>17,18</sup>

## 4 What volume of blood should be collected?

The optimal recovery of bacteria and fungi from blood depends on culturing an adequate volume of blood. The collection of a sufficient quantity of blood improves the detection of pathogenic bacteria or fungi present in low quantities.



The volume of blood that is obtained for each blood culture set is the most significant variable in recovering microorganisms from patients with bloodstream infections.<sup>19, 20</sup>

Blood culture bottles are designed to accommodate the recommended blood-to-broth ratio (1:5 to 1:10) with optimal blood volume.<sup>21</sup> Some commercial blood culture systems use a blood-to-broth ratio that is less than 1:5. This ratio is acceptable because proprietary substances that bind to and inactivate the inhibitory substances are added to blood specimens.<sup>1</sup>

### → Adults

**For an adult, the recommended volume of blood to be obtained per culture is 20 to 30 mL.**<sup>1,17</sup>

**Since each set includes an aerobic and an anaerobic bottle,** each bottle should be inoculated with approximately 10 mL of blood. This volume is recommended to optimize pathogen recovery when the bacterial/fungal burden is less than 1 Colony Forming Unit (CFU) per mL of blood, which is a common finding.



It is also generally recommended that **two or three bottle sets** (2 bottles per set) are used per septic episode, meaning, for adults, 40 to 60 mL of blood collected from the patient for the 4 to 6 bottles, with 10 mL per bottle.

For each additional milliliter of blood cultured, the yield of microorganisms recovered from adult blood increases in direct proportion up to 30 mL.<sup>22</sup> This correlation is related to the relatively low number of CFU in a milliliter of adult blood.<sup>1</sup>

### → Pediatric

The optimal volume of blood to be obtained from infants and children is less well prescribed, however, available data indicate that the yield of pathogens also increases in direct proportion to the volume of blood cultured.<sup>17, 23</sup> The recommended volume of blood to collect should be **based on the weight of the patient** (see **Table 1**)<sup>24</sup>, and an aerobic bottle should be used, unless an anaerobic infection is suspected.<sup>25</sup>

Recent studies have shown that facultative anaerobes are detected earlier or solely in the anaerobic blood culture bottle in certain pediatric populations suggesting that they should continue to be used. For newborns, infants, and children, the volume of blood drawn should be no more than 1% of the patient's total blood volume.<sup>1</sup>

Specially formulated blood culture bottles are commercially available for use in children <2 years of age. They are specifically designed to maintain the usual blood-to-broth ratio (1:5 to 1:10) with smaller blood volumes, and have been shown to improve microbial recovery.<sup>1</sup>

**Table 1: Recommendations for optimal blood volume for pediatric blood cultures based on self-defined age or weight classes<sup>24</sup>**

Adapted from Huber *et al.* The correct blood volume for paediatric blood cultures: a conundrum? *Clin Microbiol Infect.* 2020;26(2):168-173. Reproduced with permission.

Patient weight (kg)	Total blood volume <sup>a</sup> (mL)
≤2.0	1.0 - 4.5
>2.0 - 5.0	1.0 - 6.0
>5.0 - 10.0	1.5 - 10.0
>10.0 - 20.0	6.0 - 23.0
>20.0 - 30.0	≥10.0
Patient age	Total blood volume <sup>a</sup> (mL)
<1y	>0.5 - 3.0
≥1 - 3y	1.0 - 4.0
>3 - 10y	3.0 - 8.0
≥10y	20.0

<sup>a</sup> Minimum and maximum recommended total blood volume to be drawn for paediatric blood culture.

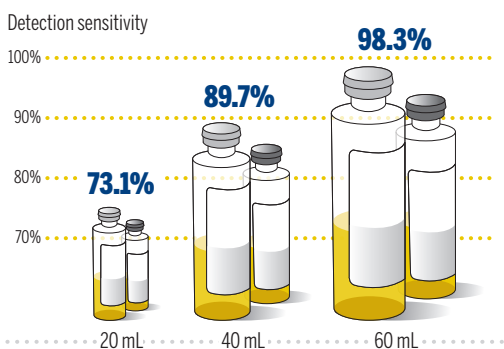
### 5 How many blood culture sets should be collected?

Since bacteria and fungi may not be constantly present in the bloodstream, **the sensitivity of a single blood culture set is limited.**

Using continuous-monitoring blood culture systems, a study investigated the cumulative sensitivity of blood cultures obtained sequentially over a 24-hour time period. It was observed that the cumulative yield of pathogens from three blood culture sets (2 bottles per set), with a blood volume of 20 mL in each set (10 mL per bottle), was 73.1% with the first set, 89.7% with the first two sets and 98.3% with the first three sets. However, to achieve a detection rate of >99% of bloodstream infections, as many as four blood culture sets may be needed.<sup>26</sup>

**Figure 2: Cumulative sensitivity of blood culture sets<sup>26</sup>**

Adapted from Lee *et al.* Detection of Bloodstream Infections in Adults: How Many Blood Cultures Are Needed? *J Clin Microbiol.* 2007; 45:3546-3548



A single blood culture bottle or set should never be drawn from adult patients, since this practice will result in an inadequate volume of blood cultured and a substantial number of bacteremic episodes may be missed.<sup>1,26</sup>

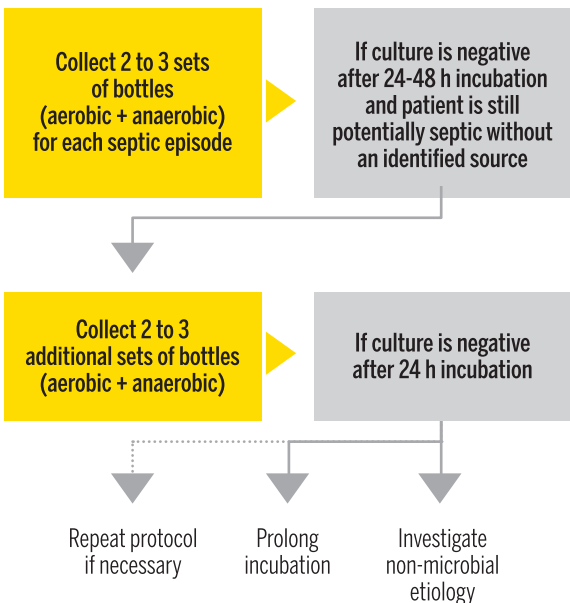
A contaminant will usually be present in only one bottle of a set of blood culture bottles, in contrast to a true bloodstream infection, in which multiple blood culture bottles/sets will be positive.

➤ Therefore, guidelines recommend to collect 2, or preferably 3, blood culture sets for each septic episode.<sup>1,6,17</sup>

If two to three sets are taken and cultures are still negative after 24-48 hours incubation, and the patient is still potentially septic, two to three additional cultures may be collected, as indicated in the following diagram.<sup>17</sup>

**Figure 3: Recommended number of blood culture sets<sup>17</sup>**

Adapted from Baron, E.J., et al. Cumitech 1C, Blood Cultures IV. Coordinating ed., E.J. Baron. ASM Press, Washington, D.C. 2005



### 6 Which media to use?

Microorganisms causing bloodstream infections are highly varied (aerobes, anaerobes, fungi, fastidious microorganisms...) and, in addition to nutrient elements, may require specific growth factors and/or a special atmosphere.

In cases where the patient is receiving antimicrobial therapy, specialized media with antibiotic neutralization capabilities should be used. **Antibiotic neutralization media** have been shown to increase recovery and provide faster time to detection *versus* standard media.<sup>27-30</sup>

It is recommended that each adult routine blood culture set include paired aerobic and anaerobic blood culture bottles.

The blood drawn should be divided equally between the aerobic and anaerobic bottles.

If an anaerobic bottle is not used, it should always be replaced by an additional aerobic bottle to ensure that a sufficient volume of blood is cultured.<sup>31</sup>

#### → A blood culture medium must be:

- **sensitive** enough to recover:
  - a broad range of clinically relevant microorganisms, even the most fastidious (*Neisseria*, *Haemophilus*...)
  - microorganisms releasing small amounts of CO<sub>2</sub> (*Brucella*, *Acinetobacter*...)
- **versatile**: able to provide a result for all types of sample collection (adults, infants, patients receiving antibiotic therapy, sterile body fluids...)

#### → Which bottle should be inoculated first?

If using a **winged blood collection set**, then the **aerobic bottle should be filled first** to prevent transfer of air in the device into the anaerobic bottle.

If using a **needle and syringe**, inoculate the **anaerobic bottle first** to avoid entry of air. If the amount of blood drawn is less than the recommended volume\*, then approximately 10 mL of blood should be inoculated into **the aerobic bottle first**, since most cases of bacteremia are caused by aerobic and facultative bacteria. In addition, pathogenic yeasts and strict aerobes (e.g. *Pseudomonas*) are recovered almost exclusively from aerobic bottles. Any remaining blood should then be inoculated into the anaerobic bottle.<sup>1</sup>

\* For recommended volumes, see page 6 "What volume of blood should be collected?"

## 7 Timing of blood cultures

Studies have shown that the time interval between collecting two blood cultures is not considered to be a critical factor as the diagnostic yield remains the same.<sup>21</sup>

Guidelines recommend that the **first two to three sets (2 bottles/set) of blood culture** be obtained either **over a brief time period (e.g. within 1 hour)** or as **a single sample taken at one time**.<sup>1,17,21</sup> The possible impact that the blood culture collection method used (e.g. single or multiple venipunctures, winged collection set or needle and syringe) may have on contamination rates should be considered.<sup>21</sup>

Drawing blood at spaced intervals, such as 1 to 2 hours apart, is only recommended to monitor continuous bacteremia/fungemia in patients with suspected infective endocarditis or other endovascular (i.e. catheter-related) infections.<sup>17</sup>

Two to three additional blood culture sets can be performed if the first two to three blood cultures are negative after 24-48 hours incubation in cases of severe infection or in order to increase detection sensitivity. This also depends on the microorganisms involved: while sensitivity is relatively good for organisms like *Escherichia coli* or *Staphylococcus aureus*, it is lower for *Pseudomonas aeruginosa*, streptococci or fungi.<sup>32</sup>

### 8 How to collect blood cultures

Sample collection is a crucial step in the blood culture process. Standard precautions must be taken, and strict aseptic conditions observed throughout the procedure. Compliance with blood culture collection recommendations can significantly improve the quality and clinical value of blood culture investigations and reduce the incidence of sample contamination and “false-positive” readings.

#### 10 Key Steps to Good Sample Collection:

For an illustrated step-by-step, see page 30.

- 1 Prior to use, **examine the bottles** for evidence of damage, deterioration or contamination. Do not use a bottle containing media which exhibits turbidity or excess gas pressure, as these are signs of possible contamination.
- 2 **Check the expiry date** printed on each bottle. Discard bottles that have expired.
- 3 **Strictly follow the collection protocol** in use in the healthcare setting, including standard precautions for handling blood at the bedside.
- 4 Blood culture bottles should be **clearly and correctly labelled**, including patient identification, date and collection time, puncture site (venipuncture or intravascular device).
- 5 For adults, each blood culture set should include **an aerobic and an anaerobic bottle**.
- 6 For adults and older children, blood should be drawn from veins in the antecubital fossae.<sup>1,21</sup>



A properly collected sample, that is free of contaminants, is key to providing accurate and reliable blood culture results.

It is recommended that blood cultures should be collected only by members of staff (medical, nursing, phlebotomist or technician) who have been fully trained and whose competence in blood culture collection has been assessed.<sup>33</sup>

**7** It is recommended to **avoid drawing blood from a venous or arterial catheter**, since these devices can be colonized with either bacteria or fungi.<sup>1,21</sup>

**8** **Carefully disinfect the skin** prior to collection of the sample using an appropriate disinfectant, including chlorhexidine in 70% isopropyl alcohol, tincture of iodine, povidone-iodine in swab or applicator form.<sup>1,21</sup>

*Use with care in premature infants or infants under 2 months of age. These products may cause irritation or chemical burns.*

**9** **Transport the inoculated bottles at room temperature** and the completed blood culture request to the clinical microbiology laboratory as quickly as possible, preferably within 2 hours per CLSI.<sup>1</sup>

Delays beyond 2 hours could result in a delay in positive bottle detection or could cause a false negative result. If delays are expected, it is important to refer to the manufacturer's Instructions For Use (IFU) for guidance.

**10** **All blood cultures should be documented** in the patient's notes, including date, time, collection site and indications.

### 9 How many days of incubation are recommended?

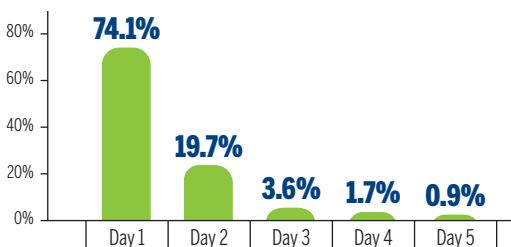


The current recommendation, and standard incubation period, for routine blood cultures performed by continuous-monitoring blood systems is 5 days.<sup>34</sup>

A study by Bourbeau, *et al.* (JCM, 2005) demonstrated that 97.4% of clinically significant isolates were recovered within the first 3 days of incubation and 93.8% within 2 days of incubation.<sup>35</sup>

Figure 4: Clinically significant isolates per day<sup>35</sup>

Adapted from Bourbeau PP *et al.* Routine incubation of BacT/ALERT® FA and FN blood culture bottles for more than 3 days may not be necessary. *J Clin Microbiol.* 2005;43(5):2506-2509



#### → Incubation of fastidious microorganisms

Another study by Cockerill, *et al.* (CID, 2004) demonstrated that, when using a continuous-monitoring blood culture system, 99.5% of non-endocarditis bloodstream infections and 100% of endocarditis episodes were detected within 5 days of incubation.<sup>22</sup> This data suggests that extended incubation periods previously recommended for detection of the fastidious microorganisms\* that sometimes cause endocarditis, are no longer necessary when using continuous-monitoring blood culture systems.<sup>17</sup>

With the exception of *Bartonella* spp., most rare or fastidious bacteria are still cultivable by traditional bacterial culture systems and can be recovered using blood culture protocols currently in use by most medical laboratories.<sup>1</sup>

\* including *Brucella*, *Capnocytophaga* and *Campylobacter* spp., and the HACEK = *Haemophilus* species, *Aggregatibacter* species, *Cardiobacterium hominis*, *Eikenella corrodens* and *Kingella* species)<sup>36</sup>



## 10 Is it a contaminant or a true pathogen?

Contamination of blood cultures during the collection process can produce a significant level of false-positive results, which can have a negative impact on patient outcome.

A **false positive** is defined as growth of bacteria in the blood culture bottle that were not present in the patient's bloodstream, and were most likely introduced during sample collection.

Contamination can come from a number of sources: the patient's skin, the equipment used to take the sample, the hands of the person taking the blood sample, or the environment.



Collecting a contaminant-free blood sample is critical to providing a blood culture result that has clinical value.


Certain microorganisms such as coagulase-negative staphylococci, *Bacillus* spp, *Cutibacterium* spp., diphtheroids, *Micrococcus* spp. rarely cause severe bacterial infections or bloodstream infections. These are **common skin contaminants**, and although they are capable of causing serious infection in the appropriate setting, their detection in a single blood culture set can reasonably be identified as a possible contaminant without clinical significance. However, it is important to consider that coagulase-negative staphylococci are the primary cause of both catheter- and prosthetic device-associated infections and may be clinically significant in up to 20% of cases.<sup>37</sup>

The most difficult interpretation problem for the physician is whether the organism recovered from a blood culture is a **true pathogen causing bloodstream infection**, or a **contaminant**. If it is a contaminant, the patient may be treated unnecessarily with antibiotics, leading to additional patient risks. Interpretation of true pathogen *versus* contaminant should be based on whether the blood has been collected with a venipuncture or an intra-vascular device, and whether the same organism was recovered from multiple blood culture sets. This illustrates the crucial nature of having **collection site information included with the blood culture request sent to the laboratory**.

## BLOOD CULTURE ESSENTIALS

---

In contrast to patients with infective endocarditis or other true positive bloodstream infections, patients whose blood cultures grow contaminants usually have only a single blood culture that is positive. This information is of great practical value for physicians, and underlines the importance of taking two to three blood culture sets from different anatomical sites.<sup>17</sup>



**Contamination rates can be most effectively reduced by strict compliance with hand hygiene rules and best practices for blood collection, particularly during the stages of skin antisepsis, venipuncture and sample transfer to blood culture bottles.**

The American Society for Microbiology and CLSI recommend targeting contamination rates of 1% of the total of collected sets.<sup>1,17</sup>

### → Impact of contamination rates

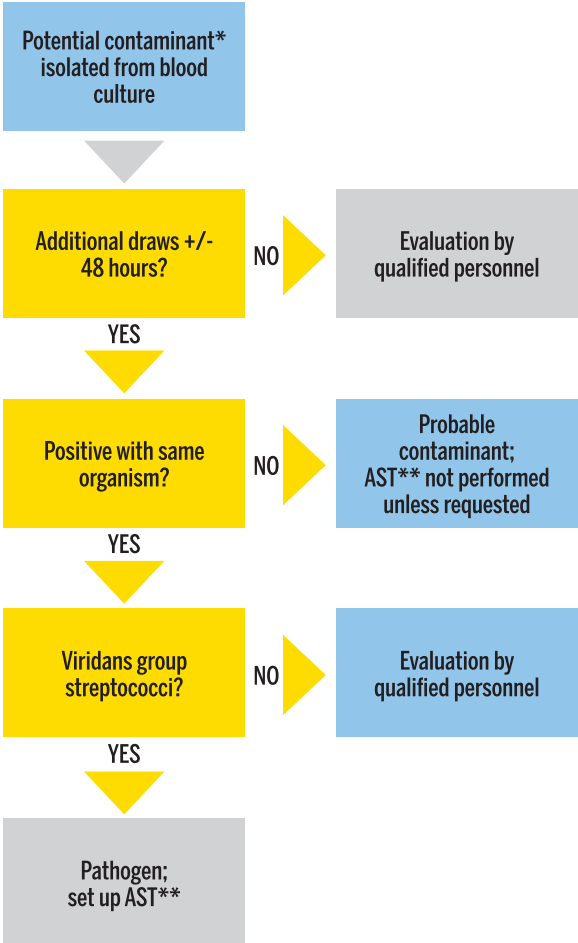
A contaminated blood culture can result in unnecessary antibiotic therapy, increased length of hospitalization and higher costs.

It has been found that each false positive result can lead to:

- increased length of stay - on average 1 day<sup>37</sup>
- 39% increase in intravenous antibiotic charges<sup>37</sup>
- \$5,000 to \$8,720 additional charges<sup>38,39</sup>
- 20% increase in laboratory charges<sup>37</sup>
- 3 days longer on antibiotics<sup>37</sup>

Figure 5: Example of a laboratory-based algorithm to determine blood culture contamination<sup>40</sup>

Adapted from Richter *et al.* Minimizing the workup of blood culture contaminants: implementation and evaluation of a laboratory-based algorithm. *J Clin Microbiol.* 2002;40(7):2437-2444. Reproduced with permission.



\* Microorganisms such as coagulase-negative staphylococci, viridans group streptococci, *Bacillus* spp., *Cutibacterium* spp., diphtheroids, *Micrococcus* spp.

\*\* AST: Antimicrobial Susceptibility Testing



## 2 SPECIAL TOPIC: INFECTIVE ENDOCARDITIS

Blood culture is essential in the diagnosis of infective endocarditis (infection of the heart valves). In this elusive disease, blood cultures may need to be taken repeatedly during febrile episodes, when bacteria are shed from the heart valves into the bloodstream. For patients with infective endocarditis, positive blood cultures will be obtained in over 90% of cases, if optimal culture conditions are respected.<sup>41</sup>

### → Acute Infective Endocarditis

This is a fulminant illness progressing rapidly over days to weeks, which may be caused by highly virulent pathogens, such as *Staphylococcus aureus*. When suspected, the severity of this disease requires blood cultures to be drawn immediately to avoid unnecessary delays in appropriate treatment.

- Multiple blood culture sets should be drawn during a 30-minute period prior to administration of empiric antimicrobial therapy.<sup>42</sup>

### → Subacute Infective Endocarditis

If subacute infection is suspected, although it is important to attempt to establish the microbiological diagnosis, antimicrobial therapy should nevertheless be initiated as soon as possible.

- Multiple blood culture sets should be obtained prior to initiation of antimicrobial therapy, with sets spaced 30 minutes to one hour apart. This may help document a continuous bacteremia, and could be of additional clinical value.<sup>1</sup>

### → Fungal Infective Endocarditis

Fungal endocarditis is a relatively rare disease, with fungi responsible for <10% of infective endocarditis cases.<sup>43</sup> However, it is the most severe form of infective endocarditis, and is associated with high mortality and morbidity.<sup>44,45</sup> *Candida* species are the most common fungal pathogens involved in infective endocarditis.<sup>40</sup> Diagnosis of fungal endocarditis can be very challenging, as blood cultures may take a long time to yield growth, with a yield for positive blood cultures of around 50%.<sup>43</sup>

### → How many cultures?

In order to distinguish between contamination and true bacteremia, a total of three to five blood culture sets should be sufficient.

- Initially, two to three blood culture sets should be obtained from patients with suspected infective endocarditis. If the results of these sets are negative at 24 hours, two more sets of cultures should be obtained, for a total of five sets overall.<sup>1</sup>

Often patients with suspected infective endocarditis have been put on antibiotics prior to blood collection. This is the most common reason for **“culture-negative” infective endocarditis**. It is therefore important to use a blood culture medium that has antimicrobial neutralization capacity in order to sustain microbial growth in the presence of antibiotics (see page 10 “Which media to use?”).<sup>24-28</sup>

However, “culture-negative” endocarditis may also be due to fastidious microorganisms, such as *Aspergillus* spp., *Brucella* spp., *Coxiella burnetii*, *Chlamydia* spp. and HACEK\* microorganisms.

- Since current continuous-monitoring blood culture systems can recover all HACEK and other fastidious organisms within a 5-day period, extending incubation beyond this period is no longer considered to be necessary. However, if all blood culture bottles are negative after 5 days, and infectious endocarditis is still suspected, all bottles should be subcultured to chocolate agar.<sup>46</sup>

\*HACEK = *Haemophilus* species, *Aggregatibacter* species, *Cardiobacterium hominis*, *Eikenella corrodens* and *Kingella* species<sup>36</sup>



### 3 PROCESSING POSITIVE BLOOD CULTURES

Today, continuously-monitored blood culture systems provide the optimum solution for blood sample processing with a recommended incubation period of 5 days.<sup>1</sup> The study discussed in **Figure 4** shows that >97% of all positive specimens were detected within the first 3 days (see page 14).<sup>35</sup>



Patients who progress to septic shock have a 7.6% increase in mortality every hour while not on appropriate therapy.<sup>14</sup>

Following an instrument-flagged positive event, the bottle is removed from the system and a Gram stain and subculture is performed.

- **If the sample is Gram stain positive**, the morphology of the organism should be reported immediately to the physician. Subcultures and, if available, rapid techniques (e.g. molecular diagnostics) should be initiated immediately in order to provide further organism identification and antibiotic susceptibility testing should be performed as soon as possible.
- **If a sample is Gram stain negative**, additional stains, such as auramine-rhodamine stain, acid-fast bacillus (AFB) stain or modified AFB stain, should be performed to screen for the organism or to search for specific organisms, e.g. *Mycobacterium* or *Nocardia*. If all the stains are negative, the blood bottle should be put back into the instrument to complete the full 5 days incubation period.

A positive blood culture is a critical result and must be reported as soon as available, due to the immediate impact on patient care decisions. When **reports are delivered rapidly**, studies have shown broadly improved outcomes and efficiencies in patient management.<sup>47,48</sup>

A study by Barenfanger, *et al.* validated that Gram stains of positive blood cultures are a very important factor influencing **appropriate therapy and patient outcomes**.<sup>49</sup> The study documented a statistically significant increase in the mortality rate for patients who had blood cultures processed after a delay (i.e. Gram stain performed  $\geq 1$  hour after being detected as

## PROCESSING POSITIVE BLOOD CULTURES

---

positive;  $P = 0.0389$ ). The timely removal and reporting of Gram stain results have a positive impact on patient care and this study supports the need for 24/7 coverage of blood culture instruments.<sup>49</sup>

Recent technological advances such as **MALDI-TOF MS** (Matrix-Assisted Laser Desorption Ionization Time of Flight Mass Spectrometry) provide the ability to rapidly deliver definitive organism identification. **Molecular diagnostics** can identify the most common pathogens in positive blood cultures as well as specific antibiotic resistance genes associated with common bloodstream pathogens. Rapid identification allows physicians to prescribe more targeted and effective antimicrobial therapy earlier to positively influence outcomes.<sup>50-52</sup>

Additionally, **antimicrobial susceptibility testing (AST)** should be performed on positive blood cultures to provide the clinician with a complete result. Appropriate use of antibiotics is crucial in cases of bloodstream infections and sepsis. Accurately determining the antimicrobial resistance profile of the causative pathogen in order to select the most effective antibiotic therapy can have a significant impact on patient outcomes.



When processed correctly, blood cultures provide clinically relevant information that can help improve patient outcomes, decrease length of hospital stay and reduce use of antibiotics.

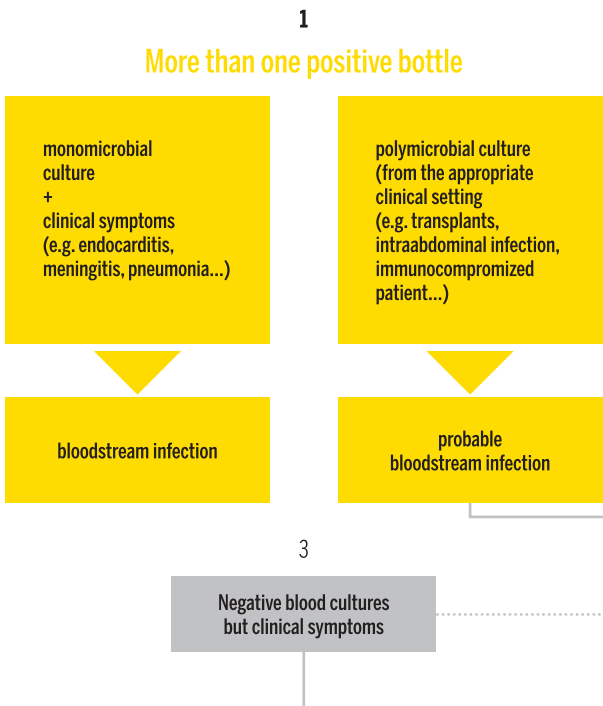


## 4 INTERPRETATION OF RESULTS

The microbiology laboratory can provide useful information to clinicians to help them determine whether a blood culture sample is a true positive or a false positive (contaminant).

**Figure 6: Example of interpretation algorithm for blood culture results<sup>57</sup>**

Adapted from Doern GV, et al. *Clin Microbiol Rev.* 2019;33(1):e00009-19





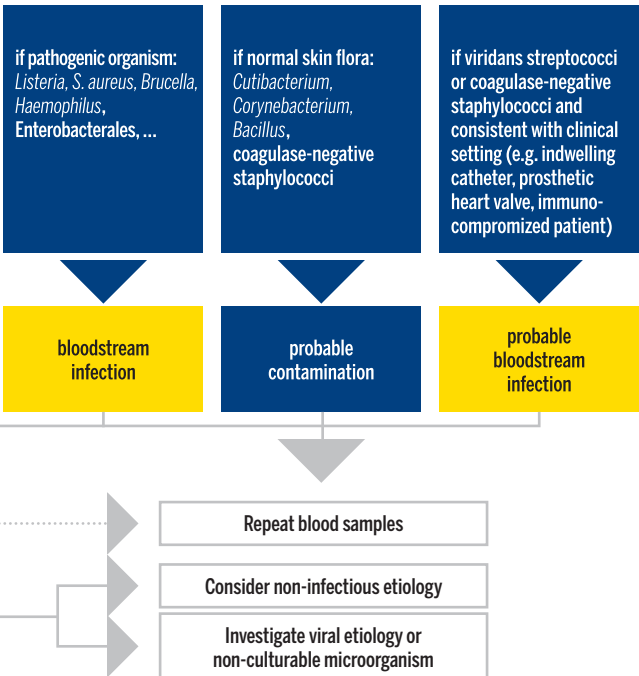
## INTERPRETATION OF RESULTS

For example, the identity of the micro-organism isolated can help determine if the culture is contaminated, and the number of cultures positive with the same organism can help predict true infections.<sup>56</sup> Time to positivity is also a factor used to determine potential contamination as contaminants usually have a delayed (longer) time-to-detection due to a lower overall bio-load.

Laboratories should consult with their medical director to create an algorithm which helps determine whether or not an isolated organism is a contaminant vs. an infective agent.

Models, such as the algorithm below, can give **guidance only on the interpretation of blood culture results**.<sup>40</sup> These guidelines should be used in conjunction with clinical guidelines, e.g. patient's full blood count, presence of catheters, radiological findings, etc.

### Only one positive bottle





## 5 BLOOD CULTURE/SEPSIS GUIDELINES

- **WHO guidelines on drawing blood: best practices in Phlebotomy.** World Health Organization 2010.  
[https://www.euro.who.int/\\_\\_data/assets/pdf\\_file/0005/268790/WHO-guidelines-on-drawing-blood-best-practices-in-phlebotomy-Eng.pdf](https://www.euro.who.int/__data/assets/pdf_file/0005/268790/WHO-guidelines-on-drawing-blood-best-practices-in-phlebotomy-Eng.pdf)
- **American Society for Microbiology: Cumitech 1C, Blood Cultures IV.** Coordinating ed., EJ Baron. ASM Press Washington, D.C. 2005
- **Supplemental reference:** Doern GV, *et al.* A comprehensive update on the problem of blood culture contamination and a discussion of methods for addressing the problem. *Clin Microbiol Rev.* 2020;33(1):e00009-e00021
- **CLSI. Principles and Procedures for Blood Cultures. 2nd ed. CLSI guideline M47. Clinical and Laboratory Standards Institute; 2022.**  
<https://clsi.org/standards/products/microbiology/documents/m47/>
- **Manual of Clinical Microbiology, 12<sup>th</sup> Edition, 2019.**  
<https://clinmicronow.org/doi/book/10.1128/9781683670438.MCM>
- **European Society for Clinical Microbiology and Infectious Diseases, European Manual for Clinical Microbiology, 1<sup>st</sup> Edition, 2012.**  
[https://www.escmid.org/escmid\\_publications/manual\\_of\\_microbiology/](https://www.escmid.org/escmid_publications/manual_of_microbiology/)

■ **Surviving sepsis campaign: international guidelines for management of sepsis and septic shock 2021.**

Evans, L., et al. *Crit Care Med.* 2021;49(11):e1063 - e1143.

[https://journals.lww.com/ccmjournal/Fulltext/2021/11000/Surviving\\_Sepsis\\_Campaign\\_International.21.aspx](https://journals.lww.com/ccmjournal/Fulltext/2021/11000/Surviving_Sepsis_Campaign_International.21.aspx)

■ **The Third International Consensus Definitions for Sepsis and Septic Shock (Sepsis-3).**

Singer M., et al. *JAMA.* 2016;315(8):801-810.

<https://jamanetwork.com/journals/jama/fullarticle/2492881>

# REFERENCES

1. CLSI. Principles and Procedures for Blood Cultures. 2nd ed. CLSI guideline M47. Clinical and Laboratory Standards Institute; 2022
2. Rudd KE, Johnson SC, Agesa KM, *et al.* Global, regional, and national sepsis incidence and mortality, 1990 – 2017: analysis for the Global Burden of Disease Study. *Lancet.* 2020;395(10219):200–211
3. WSD fact sheet 2020. [www.worldsepsisday.org/toolkits](http://www.worldsepsisday.org/toolkits) Accessed Nov 8th 2021
4. Kumar A, Ellis P, Arabi Y, *et al.* Initiation of inappropriate antimicrobial therapy results in a fivefold reduction of survival in human septic shock. *Chest.* 2009;136(5):1237-1248
5. Singer M, *et al.* The Third International Consensus Definitions for Sepsis and Septic Shock (Sepsis-3). *JAMA.* 2016;315(8):801-810
6. European Society for Clinical Microbiology and Infectious Diseases, European Manual for Clinical Microbiology, 1st Edition, 2012
7. Garey KW, Rege M, Pai MP, *et al.* Time to Initiation of Fluconazole Therapy Impacts Mortality in Patients with Candidemia: A Multi-Institutional Study. *Clin Infect Dis.* 2006;43(1):25-31
8. Khatib R, Saeed S, Sharma M, *et al.* Impact of initial antibiotic choice and delayed appropriate treatment on the outcome of *Staphylococcus aureus* bacteremia. *Eur J Clin Microbiol Infect Dis.* 2006;25(3):181-185
9. Kollef MH, Sherman G, Ward S, Fraser VJ. Inadequate antimicrobial treatment of infections: a risk factor for hospital mortality among critically ill patients. *Chest.* 1999;115(2):462-474
10. Harbarth S, Garbino J, Pugin J, *et al.* Inappropriate initial antimicrobial therapy and its effect on survival in a clinical trial of immunomodulating therapy for severe sepsis. *Am J Med.* 2003;115(7):529–535
11. Lodise TP, McKinnon PS, Swiderski L, Rybak MJ. Outcomes Analysis of Delayed Antibiotic Treatment for Hospital-Acquired *Staphylococcus aureus* Bacteremia. *Clin Infect Dis.* 2003;36(11):1419-1423
12. Kang CI, Kim SH, Kim HB, *et al.* *Pseudomonas aeruginosa* bacteremia: risk factors for mortality and influence of delayed receipt of effective antimicrobial therapy on clinical outcome. *Clin Infect Dis.* 2003;37(6):745-751
13. Forrest GN, Mankes K, Jabra-Rizk MA, *et al.* Peptide Nucleic Acid Fluorescence In Situ Hybridization-Based Identification of *Candida albicans* and Its Impact on Mortality and Antifungal Therapy Costs. *J Clin Microbiol.* 2006;44(9):3381–3383
14. Kumar A, Roberts D, Wood KE, *et al.* Duration of hypotension before initiation of effective antimicrobial therapy is the critical determinant of survival in human septic shock. *Crit Care Med.* 2006;34(6):1589-1596
15. Evans L, Rhodes A, Alhazzani W, *et al.* Surviving sepsis campaign: international guidelines for management of sepsis and septic shock 2021. *Crit Care Med.* 2021;49(11):e1063-e1143
16. Shapiro NI, Wolfe RE, Wright SB, *et al.* Who needs a blood culture? A prospectively derived and validated prediction rule. *J Emerg Med.* 2008;35(3):255-64
17. Baron EJ, Weinstein MP, Dunne Jr. WM, *et al.* Cumitech 1C, Blood Cultures IV. Coordinating ed., E.J. Baron. ASM Press, Washington, D.C. 2005
18. Scheer CS, Fuchs C, Gründling M, *et al.* Impact of antibiotic administration on blood culture positivity at the beginning of sepsis: a prospective clinical cohort study. *Clin Microbiol Infect.* 2019;25(3):326-331

19. Mermel LA, Maki DG. Detection of bacteremia in adults : consequences of culturing an inadequate volume of blood. *Ann Intern Med.* 1993;119(4):270-272
20. Bouza E, Sousa D, Rodríguez-Créixems M, *et al.* Is the volume of blood cultured still a significant factor in the diagnosis of bloodstream infections? *J Clin Microbiol.* 2007;45(9):2765-2769
21. Carroll KC, Pfaller MA, Landry ML, *et al.* Manual of Clinical Microbiology, 12th Edition, 2019
22. Cockerill FR III, Wilson JW, Vetter EA, *et al.* Optimal testing parameters for blood cultures. *Clin Infect Dis.* 2004;38 :1724-1730
23. Kellogg JA, Manzella JP, Bankert DA. Frequency of low-level bacteremia in children from birth to fifteen years of age. *J Clin Microbiol.* 2000;38(6):2181-2185
24. Huber S, Hetzer B, Crazzolara R, Orth-Höller D. The correct blood volume for paediatric blood cultures: a conundrum? *Clin Microbiol Infect.* 2020;26(2):168-173
25. Freedman SB, Roosevelt GE. Utility of anaerobic blood cultures in a pediatric emergency department. *Pediatr Emerg Care.* 2004;20(7):433-436
26. Lee A, Weinstein MP, Mirrett S, Reller LB. Detection of Bloodstream Infections in Adults: How Many Blood Cultures Are Needed ? *J Clin Microbiol.* 2007;45(11):3546-3548
27. Lee DH, Kim SC, Bae IG, *et al.* Clinical Evaluation of BacT/ALERT FA Plus and FN Plus Bottles Compared with Standard Bottles. *J Clin Microbiol.* 2013;51(12):4150-4155
28. Amarsy-Guerle R, Mougari F, Jacquier H, *et al.* High medical impact of implementing the new polymeric bead-based BacT/ALERT® FA Plus and FN Plus blood culture bottles in standard care. *Eur J Clin Microbiol Dis.* 2015;34(5):1031-1037
29. Kirn TJ, Mirrett S, Reller LB, Weinstein MP, Controlled Clinical Comparison of BacT/ALERT FA Plus and FN Plus Blood Culture Media with BacT/ALERT FA and FN Blood Culture Media. *J Clin Microbiol.* 2014;52(3):839-843
30. Doern C, Mirrett S, Halstead D, *et al.* Controlled Clinical Comparison of New Pediatric Medium with Adsorbent Polymeric Beads (PF Plus) versus Charcoal-Containing PF Medium in the BacT/ALERT Blood Culture System. *J Clin Microbiol.* 2014;52(6):1898-1900
31. Riley JA, Heiter BJ, Bourbeau P.P. Comparison of recovery of blood culture isolates from two BacT/ALERT FAN aerobic blood culture bottles with recovery from one FAN aerobic bottle and one FAN anaerobic bottle. *J Clin Microbiol.* 2003;41(1):213-217
32. Weinstein MP, Towns ML, Quartey SM, *et al.* The clinical significance of positive blood cultures in the 1990s; a prospective comprehensive evaluation of the microbiology, epidemiology, and outcome of bacteremia and fungemia in adults. *Clin Infect Dis.* 1997;24(4):584–602
33. UK Department of Health : Taking Blood Cultures – A summary of best practice. 2007
34. Wilson ML, Mirrett S, Reller LB, *et al.* Recovery of clinically important microorganisms from the BacT/ALERT blood culture system does not require testing for 7 days. *Diagn Microbiol Infect Dis.* 1993;16(1):31-34
35. Bourbeau PP, Foltzer M. Routine incubation of BacT/ALERT FA and FN blood culture bottles for more than 3 days may not be necessary. *J Clin Microbiol.* 2005;43(5):2506-2509
36. Rubin LG. 2012. Other Gram negative coccobacilli, In Principles and Practice of Pediatric Infectious Diseases, 4th Ed. Long, SS, Pickering LK, and Prober CG, eds. Elsevier, p 939-941
37. Hall KK and Lyman JA. Updated review of blood culture contamination. *Clin Microbiol Rev.* 2006;19(4):788-802

## REFERENCES

---

38. Bamber AI, Cunniffe JG, Nayar D, *et al.* The effectiveness of introducing blood culture collection packs to reduce contamination. *Br J Biomed Sci.* 2009;66(1):1-9
39. Gander RM, Byrd L, DeCrescenzo M, *et al.* Impact of blood cultures drawn by phlebotomy on contamination rates and health care costs in a hospital emergency department. *J Clin Microbiol.* 2009;47(4):1021-1024
40. Richter SS, Beekman SE, Croco DJ, *et al.* Minimizing the workup of blood culture contaminants: implementation and evaluation of a laboratory-based algorithm. *J Clin Microbiol.* 2002;40(7):2437-2444
41. Towns ML, Reller LB. Diagnostic methods : current best practices and guidelines for isolation of bacteria and fungi in infective endocarditis. *Infect Dis Clin N Am.* 2002;16(2):363-376
42. Osborn TM, Nguyen HB, Rivers EP. Emergency medicine and the surviving sepsis campaign: an international approach to managing severe sepsis and septic shock. *Ann Emerg Med* 2005;46:228-231
43. Ellis ME, Al-Abdely H, Standridge A, *et al.* Fungal endocarditis: evidence in the world literature, 1965-1995. *Clin Infect Dis.* 2001;32(1):50-62
44. Badiee P, Amirghofran AA, Nour MG, *et al.* Incidence and outcome of documented fungal endocarditis. *Int Cardiovasc Res J.* 2014;8(4):152-155
45. Pasha AK, Lee JZ, Low S-W, *et al.* Fungal Endocarditis - Update on Diagnosis and Management. *Am J Med.* 2016;129(10):1037-1043
46. Baron EJ, Scott JD, Tompkins LS. Prolonged incubation and extensive subculturing do not increase recovery of clinically significant microorganisms from standard automated blood cultures. *Clin Infect Dis.* 2005;41(11):1677-1680
47. Beekmann SE, Diekema DJ, Chapin KC, Doern GV. Effects of rapid detection of bloodstream infections on length of hospitalization and hospital charges. *J Clin Microbiol.* 2003;41(7):3119-3125
48. Munson E, Diekema DJ, Beekmann SE, *et al.* Detection and treatment of bloodstream infection: laboratory reporting and antimicrobial management. *J Clin Microbiol.* 2003;41(1):495-497
49. Barenfanger J, Graham DR, Kolluri L, *et al.* Decreased Mortality Associated With Prompt Gram Staining of Blood Cultures. *Am J Clin Pathol.* 2008;130(6):870-876
50. Timbrook T, Boger MS, Steed LL, Hurst JM. Unanticipated Multiplex PCR Identification of Polymicrobial Blood Culture Resulting in Earlier Isolation, Susceptibilities, and Optimization of Clinical Care. *J Clin Microbiol.* 2015;53(7):2371-2373
51. Bauer KA, West JE, Balada-Llasat J, *et al.* An Antimicrobial Stewardship Program's Impact with Rapid Polymerase Chain Reaction Methicillin-Resistant *Staphylococcus aureus* / *S. aureus* Blood Culture Test in Patients with *S. aureus* Bacteremia. *Clin Infect Dis.* 2010;51(9):1074-1080
52. Dierkes C, Ehrenstein B, Siebig S, *et al.* Clinical impact of a commercially available multiplex PCR system for rapid detection of pathogens in patients with presumed sepsis. *BMC Infect Dis.* 2009;9(1):126
53. CLSI. Performance Standards for Antimicrobial Susceptibility Testing. 32nd ed. CLSI supplement M100. Clinical and Laboratory Standards Institute; 2022
54. Jonasson E, Matuschek E, and Kahlmeter G. The EUCAST rapid disc diffusion method for antimicrobial susceptibility testing directly from positive blood culture bottles. *J Antimicrob Chemother.* 2020;75:968-978
55. Tibbets R, George S, Burwell R, *et al.* Performance of the Reveal Rapid Antibiotic Susceptibility Testing System on Gram-Negative Blood Cultures at a Large Urban Hospital. *J Clin Microbiol.* 2022;60(6):e0009822
56. Weinstein MP. Blood Culture Contamination: Persisting Problems and Partial Progress. *J Clin Microbiol.* 2003;41(6):2275-2278
57. Doern GV, Carroll KC, Diekema DJ. Practical Guidance for Clinical Microbiology Laboratories: A Comprehensive Update on the Problem of Blood Culture Contamination and a Discussion of Methods for Addressing the Problem. *Clin Microbiol Rev.* 2019;33(1):e00009-19
58. Applied Phlebotomy. Dennis J. Ernst, Dennis J. Ernst (MT(ASCP)). Lippincott Williams & Wilkins, 2005
59. Essentials Of Medical Laboratory Practice. Constance L Lieseke, Elizabeth A Zeibig. F.A. Davis, 2012
60. Qamruddin A, Khanna N, Orr D. Peripheral blood culture contamination in adults and venipuncture technique: prospective cohort study. *J Clin Pathol.* 2008;61(4):509-513



# RECOMMENDATIONS FOR BLOOD CULTURE COLLECTION

## A SUMMARY OF GOOD PRACTICE

### A) USING WINGED BLOOD COLLECTION SET (preferred method of collection)<sup>58-60</sup>

#### 1 PREPARE BLOOD COLLECTION KIT

Confirm the patient's identity and gather all required materials before beginning the collection process.

Do not use blood culture bottles beyond their expiration date, or bottles which show signs of damage, deterioration or contamination.



It is recommended to identify the Fill-to-Mark or mark the target fill level on the blood culture bottle label about 10 mL above the media level.



#### 2 PREPARE BOTTLES FOR INOCULATION

Wash hands with soap and water then dry, or apply an alcohol hand rub or another recognized effective hand rub solution.

Remove the plastic "flip-cap" from the blood culture bottles and disinfect the septum using an appropriate and recognized effective disinfectant, including chlorhexidine in 70% isopropyl alcohol, tincture of iodine, povidone-iodine in swab or applicator form. Use a fresh swab/applicator for each bottle.

**Allow bottle tops to dry in order to fully disinfect.**

Attach a winged blood collection set to a collection adapter cap\*.





### 3 PREPARE VENIPUNCTURE SITE

If skin is visibly soiled, clean with soap and water. Apply a disposable tourniquet and palpate for a vein. **Apply clean examination gloves** (sterile gloves are not necessary).

Cleanse the skin using an appropriate disinfectant, including chlorhexidine in 70% isopropyl alcohol, tincture of iodine, povidone-iodine in swab or applicator form. **The venipuncture site is not fully clean until the disinfectant has fully evaporated.**



### 4 VENIPUNCTURE

To prevent contaminating the puncture site, **do not re-palpate the prepared vein before inserting the needle.** Insert the needle into the prepared vein.



### 5 CULTURE BOTTLE INOCULATION

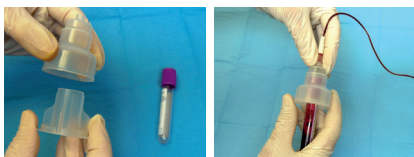
Place the adapter cap over the **aerobic bottle** and **press straight down** to pierce the septum. Hold the bottle upright, below the level of the draw site, and add up to 10 mL of blood per adult bottle and up to 4 mL per pediatric bottle.\*\* Ensure the bottle is correctly filled to the Fill-to Mark or target fill level. Once the aerobic bottle has been inoculated, repeat the procedure for the **anaerobic bottle**.



## 6 OTHER BLOOD TESTS

If blood is being collected for other tests, an insert placed into the adapter cap may be required. The insert is used to guide blood collection tubes onto the needle.

**If other blood tests are requested, always collect the blood culture first.**



## 7 FINISH THE PROCEDURE

Discard the winged collection set into a sharps container and cover the puncture site with an appropriate dressing. Remove gloves and wash hands before recording the procedure, including indication for culture, date, time, site of venipuncture, and any complications.

**Ensure that additional labels are placed in the space provided on the bottle label and do not cover the bottle barcodes, and that the tear-off barcode labels are not removed.** If additional labels contain a barcode, they should be positioned in the same manner as the bottle barcode.

Inoculated bottles should be transported to the laboratory for testing as quickly as possible, preferably within 2 hours per CLSI.<sup>1</sup> If delays are expected, it is important to refer to the manufacturer's Instructions for Use for guidance.



*\* The use of blood collection sets without blood collection adapters is not recommended.*

*\*\*Avoid holding the blood culture bottle in a horizontal or upside down position or drawing blood with a needle connected directly to the adaptor cap, as fill level cannot be monitored during collection and there is a possible risk of media reflux into the bloodstream.*

**These recommendations illustrate the best practices for blood culture collection based on the World Health Organization recommendations (WHO guidelines on drawing blood: best practices in phlebotomy. 2010. ISBN 978 92 4 159922 1). Best practices may vary between healthcare facilities; refer to guidelines applicable in your facility.**

# RECOMMENDATIONS FOR BLOOD CULTURE COLLECTION

## A SUMMARY OF GOOD PRACTICE

### B) USING NEEDLE AND SYRINGE

Conventional needles and syringes should be replaced wherever possible with winged blood collection sets, which are safer.<sup>58-60</sup>

They should only be used if prevention measures to Accidental Blood Exposure are strictly applied\*. Needles must not be recapped, purposely bent or broken by hand, removed from disposable syringes or otherwise manipulated by hand.

#### 1 PREPARE BLOOD COLLECTION KIT

**Confirm the patient's identity** and gather all required materials before beginning the collection process.

**Do not use blood culture bottles beyond their expiration date**, or bottles which show signs of damage, deterioration or contamination.

It is recommended to identify the Fill-to Mark or mark the target fill level on the blood culture bottle label about 10 mL above the media level.



## 2 PREPARE BOTTLES FOR INOCULATION

Wash hands with soap and water then dry, or apply an alcohol hand rub or another recognized effective hand rub solution.

Remove the plastic “flip-cap” from the blood culture bottles and disinfect the septum using an appropriate and recognized effective disinfectant, including chlorhexidine in 70% isopropyl alcohol, tincture of iodine, povidone-iodine in swab or applicator form. Use a fresh swab/applicator for each bottle. **Allow bottle tops to dry in order to fully disinfect.**



## 3 PREPARE VENIPUNCTURE SITE

If skin is visibly soiled, clean with soap and water. Apply a disposable tourniquet and palpate for a vein. **Apply clean examination gloves** (sterile gloves are not necessary).

Cleanse the skin using an appropriate disinfectant, including chlorhexidine in 70% isopropyl alcohol, tincture of iodine, povidone-iodine in swab or applicator form. **The venipuncture site is not fully clean until the disinfectant has fully evaporated.**



## 4 VENIPUNCTURE

Attach the needle to a syringe. **To prevent contaminating the puncture site, do not re-palpate the prepared vein before inserting the needle.**



Insert the needle into the prepared vein.

## 5 CULTURE BOTTLE INOCULATION

Collect the sample. Transfer the blood into the culture bottles. Hold the bottle upright, and add up to 10 mL of blood per adult bottle and up to 4 mL per pediatric bottle. Ensure the bottle is correctly filled to the Fill-to Mark or target fill level.



## 6 FINISH THE PROCEDURE

Discard the needle and syringe into a sharps container and cover the puncture site with an appropriate dressing. Remove gloves and wash hands before recording the procedure, including indication for culture, date, time, site of venipuncture, and any complications.

**Ensure that additional labels are placed in the space provided on the bottle label and do not cover the bottle barcodes, and that the tear-off barcode labels are not removed.** If additional labels contain a barcode, they should be positioned in the same manner as the bottle barcode. Inoculated bottles should be transported to the laboratory for testing as quickly as possible, preferably within 2 hours per CLSI.<sup>1</sup> If delays are expected, it is important to refer to the manufacturer's Instructions for Use for guidance.



\* Refer to recognized guidelines such as those issued by the WHO or CDC:

<https://www.who.int/infection-prevention/tools/injections/ToolC-revised.pdf?ua=1>

<http://www.cdc.gov/niosh/docs/2000-108/pdfs/2000-108.pdf>

These recommendations illustrate the best practices for blood culture collection based on the World Health Organization recommendations (WHO guidelines on drawing blood: best practices in phlebotomy. 2010. ISBN 978 92 4 159922 1). Best practices may vary between healthcare facilities; refer to guidelines applicable in your facility.



# bioMérieux

## *In vitro* diagnostics serving public health

---

A major player in *in vitro* diagnostics for more than 50 years, bioMérieux has always been driven by a pioneering spirit and unrelenting commitment to improve public health worldwide.

Our diagnostic solutions bring high medical value to healthcare professionals, providing them with the most relevant and reliable information, as quickly as possible, to support treatment decisions and better patient care.

bioMérieux's mission entails a commitment to support medical education, by promoting access to diagnostic knowledge for as many people as possible. Focusing on the medical value of diagnostics, our collection of educational booklets aims to raise awareness of the essential role that diagnostic test results play in healthcare decisions.

Other educational booklets are available.

Consult your local bioMérieux representative, or visit

[www.biomerieux.com/corp/en/educational-support/educational-booklets](http://www.biomerieux.com/corp/en/educational-support/educational-booklets)

The information in this booklet is for educational purposes only and is not intended to be exhaustive. It is not intended to be a substitute for professional medical advice. Always consult a medical director, physician, or other qualified health provider regarding processes and/or protocols for diagnosis and treatment of a medical condition. bioMérieux assumes no responsibility or liability for any diagnosis established or treatment prescribed by the physician.